



# **ENERGY CONSERVATION POLICY**

&  
Measures Adopted



Bapuji Educational Association®

# COLLEGE OF DENTAL SCIENCES

(Recognised by the Dental Council of India, New Delhi)  
(Affiliated to Rajiv Gandhi University of Health Sciences, Karnataka, Bengaluru)



Ref.No.CODS/648/2017-18

Date: 08/06/2017

## ENERGY CONSERVATION POLICY

Energy Conservation Policy for "Educational Environment" has been adopted by College of Dental Sciences to encourage environmental awareness and the holistic development of students.


The institution's mission is to "achieve excellence by realistically and thoroughly reducing energy consumption, ensuring acceptable indoor air quality, and improving energy efficiency on campus through strategies consistent with a safe, secure, and environmentally conscious campus community. As stated in this policy, energy conservation shall be carried out by creating a proactive and forward-thinking strategy for campus operations that are responsible, efficient, and cost-effective.

### Applies to:


Faculty, parodontal, non teaching, students and menial.

### ENERGY SAVING TIPS TO BE FOLLOWED:

- When students and staff are not using the computer or monitor, turn on power management features so that they enter a low power "sleep" mode.
- When the teachers and students leave the table, turn off the monitor.
- Make the laser printer's power management features active.
- Shut down your computer instead of signing off whenever you can.
- Turn off superfluous lighting and make use of natural sunlight.

  
Professor and Head  
Department of Oral Pathology  
College of Dental Science  
DAVANGERE-577 004.

  
Professor & HOD  
Dept. of Prosthodontics,  
College of Dental Sciences  
Davangere.

  
PROFESSOR AND HEAD  
DEPARTMENT OF PUBLIC HEALTH DENTISTRY  
COLLEGE OF DENTAL SCIENCES  
DAVANGERE-577 004, KARNATAKA, INDIA

Post Box No. 327,  
DAVANGERE - 577 004.  
KARNATAKA INDIA.

Tel. : (08192) 230432,  
231285, 231029  
Fax : 91-8192-251070 & 236493

E-mail : principalcods@gmail.com  
www.cods.edu



Bapuji Educational Association®

# COLLEGE OF DENTAL SCIENCES

(Recognised by the Dental Council of India, New Delhi)  
(Affiliated to Rajiv Gandhi University of Health Sciences, Karnataka, Bengaluru)



- Steer clear of using accent lights.
- Make use of LED or CFL lighting.
- When not in use, turn off the lights in seminar rooms, classrooms, and conference rooms.
- Only use the fans when necessary.
- Unplug devices that are not connected to power strips, such as televisions, refrigerators, air conditioners, tea/coffeepots, printers, and chargers.
- All the above promotional activities are under ambitious responsibility of IQAC, the Director & Maintenance department (who calculates approx. energy usage & energy saved) so far, but very soon it will be under "Green Audit committee" which includes internal members and 2 external members.

*Rajeshwari. G. Annigei*  
Professor and Head  
Department of Oral Medicine  
and Radiology.  
College of Dental Sciences,  
DAVANGERE-577 004

*V. Anurag*  
PRINCIPAL,  
College of Dental Sciences  
Davangere-4

*Siva*  
Dr. SIVA BHARANI K.S.N.  
Professor & HOD  
Department of Oral & Maxillofacial Surgery  
CODS, DAVANGERE.

*Puornima P.*  
Dr. PUORNIMA. P.  
PROFESSOR & HOD  
Dept. of Pedodontics & Preventive Dentistry  
College of Dental Sciences, Davangere.



Bapuji Educational Association®  
**COLLEGE OF DENTAL SCIENCES**

(Recognised by the Dental Council of India, New Delhi)  
(Affiliated to Rajiv Gandhi University of Health Sciences, Karnataka, Bengaluru)



**ENERGY CONSERVATION MEASURES ADOPTED UNDER THE POLICY:**

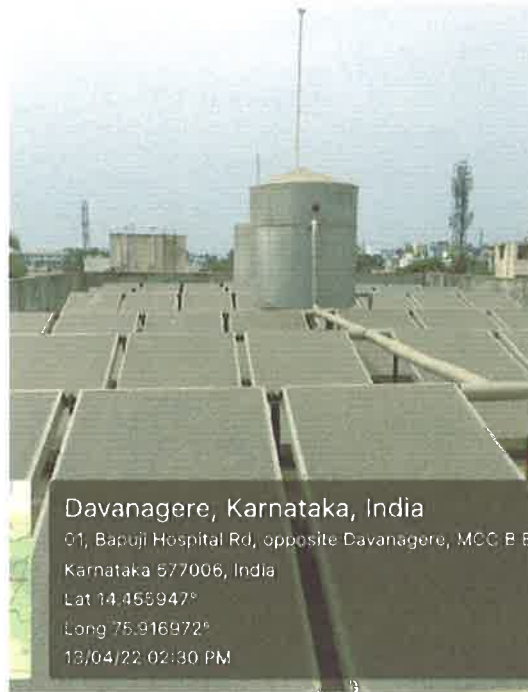
**SOLAR ENERGY:**

Solar power is clean energy. It doesn't produce any "greenhouse" gases that trap heat, such as carbon dioxide. It prevents the environmental harm brought on by drilling or mining for fossil fuels.

CODS has created an institution-wide energy conservation. Organisation has installed Solar panel station in hostel as part of a system to employ renewable energy. In addition to giving the hostel a constant supply of hot water, this also guarantees that a sizeable portion of the institute's energy needs are met by renewable energy, adhering to environmental sustainability.

**Incharge:**

Supervisor of  
Maintenance Dept.,  
CODS, Hostel Manager  
Support staff-1



Davanagere, Karnataka, India  
01, Bapuji Hospital Rd, opposite Davanagere, MCC B 51  
Karnataka 577006, India  
Lat 14.455947°  
Long 75.916972°  
13/04/22 02:30 PM

*V. Lakshmi*  
**PRINCIPAL,**  
College of Dental Sciences,  
Davanagere-4.



Bapuji Educational Association®

# COLLEGE OF DENTAL SCIENCES

(Recognised by the Dental Council of India, New Delhi)  
(Affiliated to Rajiv Gandhi University of Health Sciences, Karnataka, Bengaluru)



## SENSOR-BASED ENERGY CONSERVATION:

Temporary switches known as motion sensor lights activate the lights when a sensor detects movement inside its area of vision. The light will stay on for a predetermined period of time after any detected movement and will continue to stay on as movement takes place. The motion sensor switch will turn the lights off after a certain amount of idleness.

These bulbs have been installed in the institution where it is useful during night hours, mainly in wards of oral surgery department corridor and main entrance corridor.



### **Incharge:**

Supervisor of  
Maintenance Dept.,  
CODS,  
Support staff-1



*H. H. H. H.*  
**PRINCIPAL,**  
College of Dental Science,  
Davanagere-4



Bapuji Educational Association®  
**COLLEGE OF DENTAL SCIENCES**

(Recognised by the Dental Council of India, New Delhi)  
 (Affiliated to Rajiv Gandhi University of Health Sciences, Karnataka, Bengaluru)



**USE OF LED BULBS/POWER EFFICIENT EQUIPMENT:**

LED bulbs are the most energy-efficient lighting, College has implemented energy saving practises that include replacing all tube lights with LED tubes as on when required. According to incandescent tubes, LED tubes consume 75% less electricity than incandescent tubes. Traditional incandescent tubes have a lifespan of around 25 times shorter than LED tubes. LED completely fulfils all illumination requirements.

By reinforcing them about basic measures that can significantly cut electricity consumption, such as having students and staff switch off all lights, appliances, and devices when not in use, energy conservation practises and eco-friendly habits are fostered among students and employees. Incharge: Supervisor of Maintenance Dept., CODS, Support staff-1



*V. elhelim*  
 Principal,  
 College of Dental Sciences  
 Davanagere.